



# Lido eRoute Manual

## A comprehensive navigation solution for Windows

### Lido eRoute Manual

Boost your flight operations with Lido eRoute Manual, an all-inclusive charting application for Windows. Lido eRoute Manual streamlines flight navigation by providing seamless access to terminal charts, dynamically generated Enroute Maps, an Airport Moving Map (AMM), and operational documents. Its data-driven, interactive maps, coupled with Lido Data Solutions, can help your operations reach new levels of efficiency.

### Modern, intuitive interface

The latest release features a redesigned user interface, enabling faster access to flight plans, weather, avionics status, and navigation panels. This refined UI reduces pilot workload and enhances decision-making during all phases of flight.

Lido Route Manual charts, meticulously crafted for Lido eRoute Manual, display aeronautical procedures and information intuitively. Featuring high-contrast colors optimized for electronic displays, these charts are available in both light and dark modes.

### Advanced enroute mapping

The upgraded Enroute module offers terrain depiction, geo-cultural data, and smooth zooming and panning. Pilots can easily toggle map layers, including a new “Small Airports” sub-layer. A decluttering function adjusts airport visibility based on zoom level. The updated map aligns with Lido mPilot for a consistent cross-platform experience.

### Key benefits & features



#### Effortless airport navigation

- Explore airport layouts in exceptional detail, visualize taxiways, and navigate with ease.



#### Advanced weather forecasting

- Make informed decisions with real-time and forecasted weather updates integrated directly into the platform.
- Enhance operational efficiency and ensure a smooth, predictable flight.



#### Seamless workflow integration

- Lido eRoute Manual seamlessly integrates with modern airline workflows.



#### Enhanced pilot situational awareness

- Display the own-ship symbol on all chart types.



#### World-class customer support

- Available 24/7 to assist with any enquiries or issues.

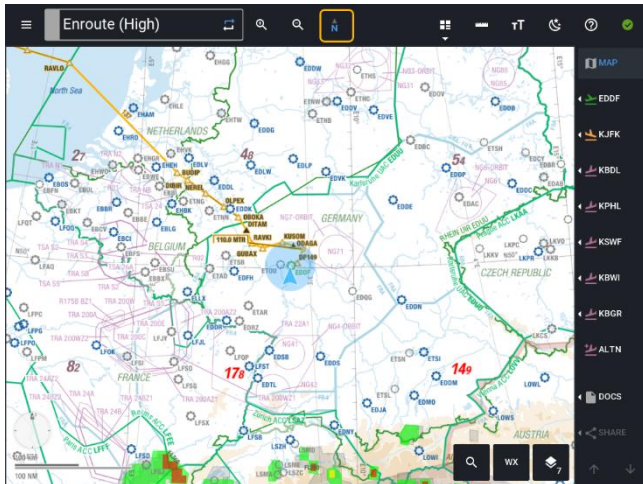


**Lufthansa Systems**

# Navigate with certainty

## Enhanced situational awareness

With own-ship symbols standardized across all modules—enroute map, terminal charts, and AMM—pilots enjoy a uniform, clearer visual experience that improves orientation and safety.



Enroute map features own-ship symbol status

## Seamless workflow integration

Lido eRoute Manual seamlessly integrates with modern airline workflows. By reducing pilot information overload and highlighting pertinent flight data based on aircraft location and flight plans, it ensures that critical information is always at the pilot's fingertips.

## Effortless airport navigation

The Lido Airport Moving Map (AMM) is a digital navigation tool designed for pilots and aviation professionals to enhance airport situational awareness with real-time aircraft positioning and dynamically rendered airport layouts.



Lido Airport Moving Map in Lido eRM

Let's fly smarter

Covering many global airports, the AMM supports pilots with an own-ship symbol display, helping them maintain spatial awareness during ground operations. By reducing the risk of runway incursions and enabling optimized taxi routing, the system improves operational safety and efficiency. It also facilitates clearer communication between pilots and ground controllers, particularly in complex environments or low visibility conditions.

## Advanced weather information

Lido eRoute Manual offers enhanced weather insights to support safer and more efficient flight operations. Pilots can access real-time Radar-based Convection data (EU) to better identify and avoid areas of severe weather, improving situational awareness and tactical decision-making. Additionally, the integration of Precipitation Radar (EU) provides accurate, up-to-date precipitation information, assisting in both pre-flight planning and in-flight route adjustments.

Comprehensive OPMET data—including SIGMETs, AIRMETs, Tropical Cyclone Advisories, and Volcanic Ash Advisories—supports proactive weather avoidance. Turbulence forecasts and IATA Turbulence AIREPs assist in selecting smoother routes, while forecast icing information aids in altitude and fuel planning.

By consolidating these advanced weather layers into one integrated navigation solution, Lido eRoute Manual enhances strategic and tactical planning capabilities, helping crews anticipate and adapt to dynamic weather conditions throughout all phases of flight.

## GPS spoofing awareness

To address the growing risk of GPS spoofing in aviation, Lido eRoute Manual will soon feature an integrated GPSWise spoofing detection layer, powered by SKAI Data Services. This real-time, dynamic data provides precise, location-based alerts, enabling faster and more targeted responses to spoofing threats—far beyond traditional manual reporting. By enhancing situational awareness and reducing reliance on outdated sources, this layer supports safer, more resilient navigation in affected regions.

For more information please contact  
[marketing@LHsystems.com](mailto:marketing@LHsystems.com)